



21 22

28 27

N 00°18'12" E 867.82'  
N 00°18'12" E 352.47'  
S 00°18'12" W 951.08'  
WHEEL RANCH #1 SUBDIVISION  
BOOK 4 PAGE 4 OF PLATS

N 89°24'26" W  
1328.94'  
(1328.33)

1/16 COR  
calculated position

buried telephone and overhead power

LOOMIS LANE

BOULDER CREEK MEADOWS SUBDIVISION  
BOOK 5 PAGE 6 OF PLATS

L=384.42'  
R=358.59'  
D=61°15'08"  
CLEN=366.36' (288.87)  
BRG=N 54°55'19" E  
(N 64°54'44" E)

DURHAM LANE

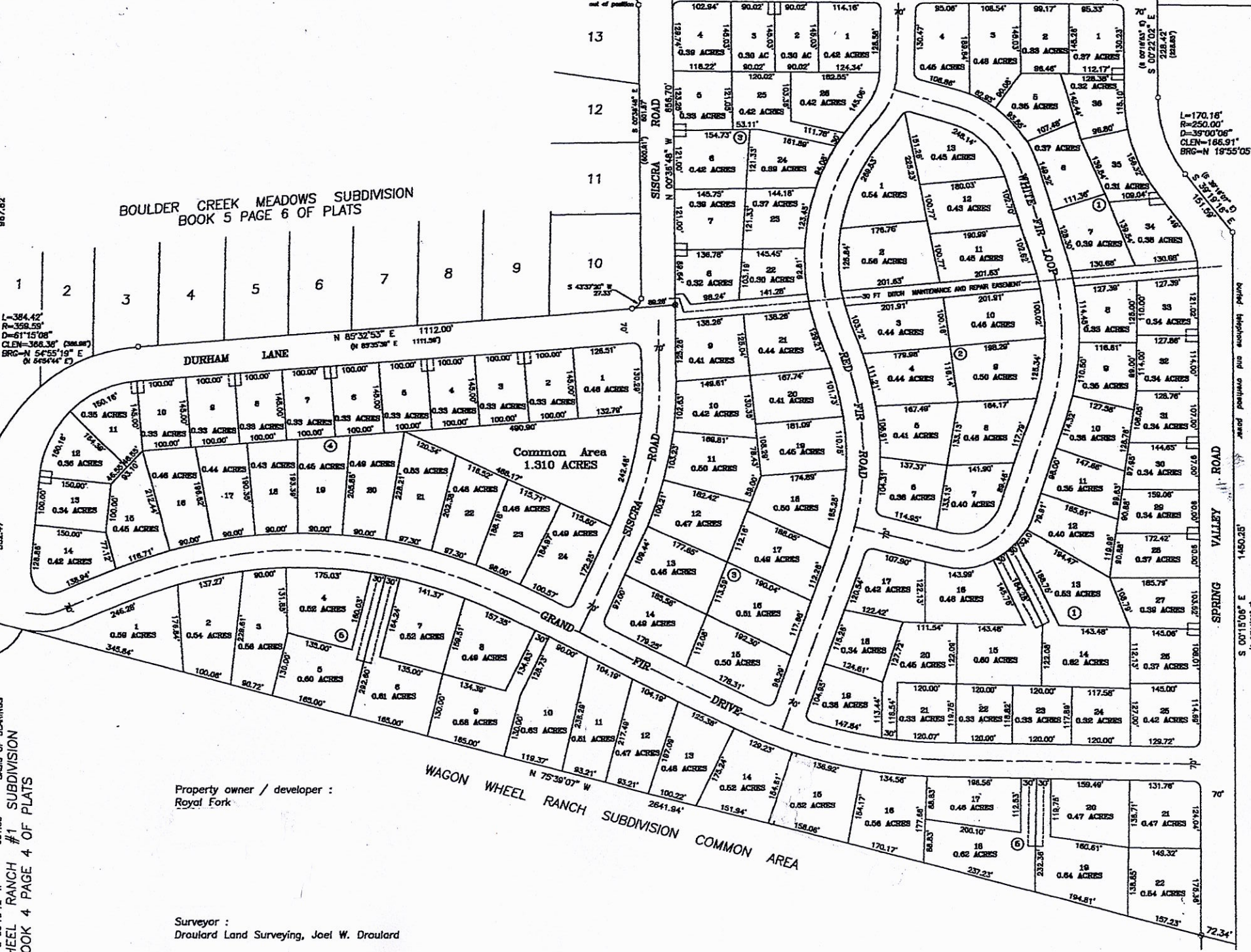
Common Area  
1.310 ACRES

GRAND

WAGON WHEEL RANCH SUBDIVISION  
COMMON AREA

Property owner / developer :  
Royal Fork

Surveyor :  
Droulard Land Surveying, Joel W. Droulard



L=170.18'  
R=250.00'  
D=39°00'06"  
CLEN=186.91'  
BRG=N 19°55'05"

SPRING VALLEY ROAD

need purchase and enclose plat

S 00°15'04" E 1480.25'



# FIR GROVE ESTATES

situate in the NW 1/4 of Section 27, T. 16 N., R 3 E., B.M. Valley County, Idaho  
DROULARD LAND SURVEYING  
MAY 2005

1/4 COR  
CPF #99670

Book 10 Page 9  
of Plats  
Inst. No. 296061

**LINE TABLE**

LINE	BEARING	DISTANCE
L1	S 88°12'43" W	17.21'
L2	S 34°34'51" E	24.99'
L3	S 00°57'49" E	30.76'
L4	S 00°36'48" E	21.93'

**CURVE TABLE**

CURVE	RADIUS	ARC LENGTH	CHORD LENGTH	CHORD BEARING	DELTA ANGLE
C1	15.00'	23.84'	21.41'	N 44°55'09" E	91°03'54"
C2	15.00'	23.81'	21.39'	N 44°04'50" E	90°56'08"
C3	15.00'	23.32'	21.04'	N 45°56'10" E	89°03'52"
C4	15.00'	23.35'	21.06'	S 44°57'28" E	89°10'52"
C5	285.00'	193.76'	190.05'	N 19°50'39" W	38°57'14"
C6	320.00'	66.10'	65.98'	N 08°17'06" W	11°50'08"
C7	320.00'	151.46'	150.05'	N 28°45'43" W	27°07'08"
C8	250.00'	170.18'	166.91'	N 19°55'05" W	39°00'08"
C9	220.00'	150.02'	147.13'	S 19°47'11" E	39°04'10"
C10	185.00'	92.99'	92.01'	S 22°55'19" E	28°47'54"
C11	185.00'	30.04'	30.01'	S 05°52'16" E	09°18'11"
C12	150.00'	38.10'	38.09'	S 08°39'53" W	14°33'17"
C13	150.00'	63.56'	63.09'	S 28°04'56" W	24°16'48"
C14	15.00'	19.75'	18.36'	N 38°20'07" W	75°26'43"
C15	15.00'	10.93'	10.69'	N 85°04'29" E	41°44'05"
C16	25.00'	8.85'	8.72'	N 47°16'49" E	33°47'16"
C17	235.00'	63.12'	62.93'	S 62°04'17" E	15°23'20"
C18	235.00'	94.18'	93.95'	S 45°53'43" E	22°57'47"
C19	235.00'	55.36'	55.24'	S 24°33'53" E	13°29'53"
C20	200.00'	195.97'	188.23'	S 45°59'12" E	56°08'33"
C21	165.00'	161.68'	155.29'	S 45°59'12" E	56°08'33"
C22	535.00'	33.27'	33.27'	S 16°08'03" E	03°33'48"
C23	535.00'	30.30'	30.29'	S 12°43'49" E	03°14'41"
C24	485.00'	17.06'	17.06'	S 16°51'53" E	02°06'08"
C25	485.00'	30.39'	30.39'	S 15°56'27" E	02°06'08"
C26	500.00'	318.54'	313.18'	S 02°20'07" W	39°30'08"
C27	485.00'	100.21'	100.02'	S 09°58'40" E	12°20'39"
C28	485.00'	143.72'	144.42'	S 04°58'03" E	12°16'51"
C29	485.00'	143.72'	143.34'	S 08°01'30" W	13°29'21"
C30	535.00'	110.89'	110.50'	S 07°06'01" W	11°51'17"
C31	465.00'	22.85'	22.85'	S 17°10'43" W	02°46'58"
C32	535.00'	51.90'	51.86'	S 15°48'26" W	05°33'51"
C33	115.00'	77.95'	76.46'	S 20°48'17" W	38°50'05"
C34	435.00'	34.82'	34.81'	N 37°53'44" E	04°35'12"
C35	435.00'	32.18'	32.17'	N 33°30'58" E	04°14'18"
C36	435.00'	94.26'	94.08'	N 28°11'22" E	12°24'55"
C37	400.00'	431.38'	410.78'	N 09°19'36" E	61°47'28"
C38	355.00'	186.71'	194.33'	N 24°47'00" E	30°52'40"
C39	435.00'	123.87'	123.45'	N 10°48'26" E	16°18'55"
C40	435.00'	92.99'	92.81'	N 03°27'27" W	12°14'51"
C41	355.00'	126.47'	125.84'	N 00°34'56" W	19°51'14"
C42	435.00'	30.22'	30.21'	N 11°34'17" W	03°58'48"
C43	355.00'	30.31'	30.30'	N 12°53'17" W	04°45'30"
C44	435.00'	60.79'	60.74'	N 17°33'55" W	08°00'28"
C45	355.00'	40.14'	40.12'	N 18°25'05" W	06°18'06"
C46	635.00'	20.97'	20.97'	S 20°37'23" E	01°53'31"
C47	565.00'	28.87'	28.87'	S 20°15'26" E	02°37'24"
C48	565.00'	101.88'	101.73'	S 31°46'50" E	10°19'48"
C49	600.00'	371.04'	365.15'	S 03°51'11" E	35°25'54"
C50	635.00'	111.36'	111.21'	S 14°39'11" E	10°02'51"
C51	635.00'	107.04'	106.91'	S 04°48'01" E	08°39'28"
C52	565.00'	110.93'	110.78'	S 02°59'29" E	11°14'56"
C53	735.00'	103.31'	103.23'	S 11°19'46" W	08°03'12"
C54	735.00'	102.72'	102.63'	S 03°17'57" E	08°00'26"
C55	735.00'	4.81'	4.81'	S 00°53'30" E	00°22'30"
C56	235.00'	17.60'	17.60'	S 17°54'43" E	04°17'31"
C57	700.00'	328.88'	325.87'	S 12°22'50" W	26°55'10"
C58	185.00'	31.65'	31.61'	S 35°19'15" W	09°48'09"
C59	185.00'	3.13'	3.13'	S 00°44'08" E	00°58'05"

## SANITARY RESTRICTIONS

SANITARY RESTRICTIONS AS REQUIRED BY IDAHO CODE, TITLE 50, CHAPTER 13, HAVE BEEN PARTIALLY SATISFIED AND ARE RELEASED FOR THE FOLLOWING LOTS: BLOCK 1, LOTS 1, 2, 3, 4, 5, 6, 7, 8, 9, 10, 11, 12, 13, 14, 15, 16, 17, 18, 19, 20, 21, 22, BLOCK 2, LOTS 1, 2, 3, 4, 5, 6, 7, 8, 9, 10, 11, 12, 13, 14, 15, 16, 17, 18, 19, 20, 21, 22, BLOCK 3, LOTS 1, 2, 3, 4, 5, 6, 7, 8, 9, 10, 11, 12, 13, 14, 15, 16, 17, 18, 19, 20, 21, 22, BLOCK 4, LOTS 1, 2, 3, 4, 5, 6, 7, 8, 9, 10, 11, 12, 13, 14, 15, 16, 17, 18, 19, 20, 21, 22, BLOCK 5, LOTS 1, 2, 3, 4, 5, 6, 7, 8, 9, 10, 11, 12, 13, 14, 15, 16, 17, 18, 19, 20, 21, 22, BLOCK 6, LOTS 1, 2, 3, 4, 5, 6, 7, 8, 9, 10, 11, 12, 13, 14, 15, 16, 17, 18, 19, 20, 21, 22, BLOCK 7, LOTS 1, 2, 3, 4, 5, 6, 7, 8, 9, 10, 11, 12, 13, 14, 15, 16, 17, 18, 19, 20, 21, 22, BLOCK 8, LOTS 1, 2, 3, 4, 5, 6, 7, 8, 9, 10, 11, 12, 13, 14, 15, 16, 17, 18, 19, 20, 21, 22, BLOCK 9, LOTS 1, 2, 3, 4, 5, 6, 7, 8, 9, 10, 11, 12, 13, 14, 15, 16, 17, 18, 19, 20, 21, 22, BLOCK 10, LOTS 1, 2, 3, 4, 5, 6, 7, 8, 9, 10, 11, 12, 13, 14, 15, 16, 17, 18, 19, 20, 21, 22, BLOCK 11, LOTS 1, 2, 3, 4, 5, 6, 7, 8, 9, 10, 11, 12, 13, 14, 15, 16, 17, 18, 19, 20, 21, 22, BLOCK 12, LOTS 1, 2, 3, 4, 5, 6, 7, 8, 9, 10, 11, 12, 13, 14, 15, 16, 17, 18, 19, 20, 21, 22, BLOCK 13, LOTS 1, 2, 3, 4, 5, 6, 7, 8, 9, 10, 11, 12, 13, 14, 15, 16, 17, 18, 19, 20, 21, 22, BLOCK 14, LOTS 1, 2, 3, 4, 5, 6, 7, 8, 9, 10, 11, 12, 13, 14, 15, 16, 17, 18, 19, 20, 21, 22, BLOCK 15, LOTS 1, 2, 3, 4, 5, 6, 7, 8, 9, 10, 11, 12, 13, 14, 15, 16, 17, 18, 19, 20, 21, 22, BLOCK 16, LOTS 1, 2, 3, 4, 5, 6, 7, 8, 9, 10, 11, 12, 13, 14, 15, 16, 17, 18, 19, 20, 21, 22, BLOCK 17, LOTS 1, 2, 3, 4, 5, 6, 7, 8, 9, 10, 11, 12, 13, 14, 15, 16, 17, 18, 19, 20, 21, 22, BLOCK 18, LOTS 1, 2, 3, 4, 5, 6, 7, 8, 9, 10, 11, 12, 13, 14, 15, 16, 17, 18, 19, 20, 21, 22, BLOCK 19, LOTS 1, 2, 3, 4, 5, 6, 7, 8, 9, 10, 11, 12, 13, 14, 15, 16, 17, 18, 19, 20, 21, 22, BLOCK 20, LOTS 1, 2, 3, 4, 5, 6, 7, 8, 9, 10, 11, 12, 13, 14, 15, 16, 17, 18, 19, 20, 21, 22, BLOCK 21, LOTS 1, 2, 3, 4, 5, 6, 7, 8, 9, 10, 11, 12, 13, 14, 15, 16, 17, 18, 19, 20, 21, 22, BLOCK 22, LOTS 1, 2, 3, 4, 5, 6, 7, 8, 9, 10, 11, 12, 13, 14, 15, 16, 17, 18, 19, 20, 21, 22, BLOCK 23, LOTS 1, 2, 3, 4, 5, 6, 7, 8, 9, 10, 11, 12, 13, 14, 15, 16, 17, 18, 19, 20, 21, 22, BLOCK 24, LOTS 1, 2, 3, 4, 5, 6, 7, 8, 9, 10, 11, 12, 13, 14, 15, 16, 17, 18, 19, 20, 21, 22, BLOCK 25, LOTS 1, 2, 3, 4, 5, 6, 7, 8, 9, 10, 11, 12, 13, 14, 15, 16, 17, 18, 19, 20, 21, 22, BLOCK 26, LOTS 1, 2, 3, 4, 5, 6, 7, 8, 9, 10, 11, 12, 13, 14, 15, 16, 17, 18, 19, 20, 21, 22, BLOCK 27, LOTS 1, 2, 3, 4, 5, 6, 7, 8, 9, 10, 11, 12, 13, 14, 15, 16, 17, 18, 19, 20, 21, 22, BLOCK 28, LOTS 1, 2, 3, 4, 5, 6, 7, 8, 9, 10, 11, 12, 13, 14, 15, 16, 17, 18, 19, 20, 21, 22, BLOCK 29, LOTS 1, 2, 3, 4, 5, 6, 7, 8, 9, 10, 11, 12, 13, 14, 15, 16, 17, 18, 19, 20, 21, 22, BLOCK 30, LOTS 1, 2, 3, 4, 5, 6, 7, 8, 9, 10, 11, 12, 13, 14, 15, 16, 17, 18, 19, 20, 21, 22, BLOCK 31, LOTS 1, 2, 3, 4, 5, 6, 7, 8, 9, 10, 11, 12, 13, 14, 15, 16, 17, 18, 19, 20, 21, 22, BLOCK 32, LOTS 1, 2, 3, 4, 5, 6, 7, 8, 9, 10, 11, 12, 13, 14, 15, 16, 17, 18, 19, 20, 21, 22, BLOCK 33, LOTS 1, 2, 3, 4, 5, 6, 7, 8, 9, 10, 11, 12, 13, 14, 15, 16, 17, 18, 19, 20, 21, 22, BLOCK 34, LOTS 1, 2, 3, 4, 5, 6, 7, 8, 9, 10, 11, 12, 13, 14, 15, 16, 17, 18, 19, 20, 21, 22, BLOCK 35, LOTS 1, 2, 3, 4, 5, 6, 7, 8, 9, 10, 11, 12, 13, 14, 15, 16, 17, 18, 19, 20, 21, 22, BLOCK 36, LOTS 1, 2, 3, 4, 5, 6, 7, 8, 9, 10, 11, 12, 13, 14, 15, 16, 17, 18, 19, 20, 21, 22, BLOCK 37, LOTS 1, 2, 3, 4, 5, 6, 7, 8, 9, 10, 11, 12, 13, 14, 15, 16, 17, 18, 19, 20, 21, 22, BLOCK 38, LOTS 1, 2, 3, 4, 5, 6, 7, 8, 9, 10, 11, 12, 13, 14, 15, 16, 17, 18, 19, 20, 21, 22, BLOCK 39, LOTS 1, 2, 3, 4, 5, 6, 7, 8, 9, 10, 11, 12, 13, 14, 15, 16, 17, 18, 19, 20, 21, 22, BLOCK 40, LOTS 1, 2, 3, 4, 5, 6, 7, 8, 9, 10, 11, 12, 13, 14, 15, 16, 17, 18, 19, 20, 21, 22, BLOCK 41, LOTS 1, 2, 3, 4, 5, 6, 7, 8, 9, 10, 11, 12, 13, 14, 15, 16, 17, 18, 19, 20, 21, 22, BLOCK 42, LOTS 1, 2, 3, 4, 5, 6, 7, 8, 9, 10, 11, 12, 13, 14, 15, 16, 17, 18, 19, 20, 21, 22, BLOCK 43, LOTS 1, 2, 3, 4, 5, 6, 7, 8, 9, 10, 11, 12, 13, 14, 15, 16, 17, 18, 19, 20, 21, 22, BLOCK 44, LOTS 1, 2, 3, 4, 5, 6, 7, 8, 9, 10, 11, 12, 13, 14, 15, 16, 17, 18, 19, 20, 21, 22, BLOCK 45, LOTS 1, 2, 3, 4, 5, 6, 7, 8, 9, 10, 11, 12, 13, 14, 15, 16, 17, 18, 19, 20, 21, 22, BLOCK 46, LOTS 1, 2, 3, 4, 5, 6, 7, 8, 9, 10, 11, 12, 13, 14, 15, 16, 17, 18, 19, 20, 21, 22, BLOCK 47, LOTS 1, 2, 3, 4, 5, 6, 7, 8, 9, 10, 11, 12, 13, 14, 15, 16, 17, 18, 19, 20, 21, 22, BLOCK 48, LOTS 1, 2, 3, 4, 5, 6, 7, 8, 9, 10, 11, 12, 13, 14, 15, 16, 17, 18, 19, 20, 21, 22, BLOCK 49, LOTS 1, 2, 3, 4, 5, 6, 7, 8, 9, 10, 11, 12, 13, 14, 15, 16, 17, 18, 19, 20, 21, 22, BLOCK 50, LOTS 1, 2, 3, 4, 5, 6, 7, 8, 9, 10, 11, 12, 13, 14, 15, 16, 17, 18, 19, 20, 21, 22, BLOCK 51, LOTS 1, 2, 3, 4, 5, 6, 7, 8, 9, 10, 11, 12, 13, 14, 15, 16, 17, 18, 19, 20, 21, 22, BLOCK 52, LOTS 1, 2, 3, 4, 5, 6, 7, 8, 9, 10, 11, 12, 13, 14, 15, 16, 17, 18, 19, 20, 21, 22, BLOCK 53, LOTS 1, 2, 3, 4, 5, 6, 7, 8, 9, 10, 11, 12, 13, 14, 15, 16, 17, 18, 19, 20, 21, 22, BLOCK 54, LOTS 1, 2, 3, 4, 5, 6, 7, 8, 9, 10, 11, 12, 13, 14, 15, 16, 17, 18, 19, 20, 21, 22, BLOCK 55, LOTS 1, 2, 3, 4, 5, 6, 7, 8, 9, 10, 11, 12, 13, 14, 15, 16, 17, 18, 19, 20, 21, 22, BLOCK 56, LOTS 1, 2, 3, 4, 5, 6, 7, 8, 9, 10, 11, 12, 13, 14, 15, 16, 17, 18, 19, 20, 21, 22, BLOCK 57, LOTS 1, 2, 3, 4, 5, 6, 7, 8, 9, 10, 11, 12, 13, 14, 15, 16, 17, 18, 19, 20, 21, 22, BLOCK 58, LOTS 1, 2, 3, 4, 5, 6, 7, 8, 9, 10, 11, 12, 13, 14, 15, 16, 17, 18, 19, 20, 21, 22, BLOCK 59, LOTS 1, 2, 3, 4, 5, 6, 7, 8, 9, 10, 11, 12, 13, 14, 15, 16, 17, 18, 19, 20, 21, 22, BLOCK 60, LOTS 1, 2, 3, 4, 5, 6, 7, 8, 9, 10, 11, 12, 13, 14, 15, 16, 17, 18, 19, 20, 21, 22, BLOCK 61, LOTS 1, 2, 3, 4, 5, 6, 7, 8, 9, 10, 11, 12, 13, 14, 15, 16, 17, 18, 19, 20, 21, 22, BLOCK 62, LOTS 1, 2, 3, 4, 5, 6, 7, 8, 9, 10, 11, 12, 13, 14, 15, 16, 17, 18, 19, 20, 21, 22, BLOCK 63, LOTS 1, 2, 3, 4, 5, 6, 7, 8, 9, 10, 11, 12, 13, 14, 15, 16, 17, 18, 19, 20, 21, 22, BLOCK 64, LOTS 1, 2, 3, 4, 5, 6, 7, 8, 9, 10, 11, 12, 13, 14, 15, 16, 17, 18, 19, 20, 21, 22, BLOCK 65, LOTS 1, 2, 3, 4, 5, 6, 7, 8, 9, 10, 11, 12, 13, 14, 15, 16, 17, 18, 19, 20, 21, 22, BLOCK 66, LOTS 1, 2, 3, 4, 5, 6, 7, 8, 9, 10, 11, 12, 13, 14, 15, 16, 17, 18, 19, 20, 21, 22, BLOCK 67, LOTS 1, 2, 3, 4, 5, 6, 7, 8, 9, 10, 11, 12, 13, 14, 15, 16, 17, 18, 19, 20, 21, 22, BLOCK 68, LOTS 1, 2, 3, 4, 5, 6, 7, 8, 9, 10, 11, 12, 13, 14, 15, 16, 17, 18, 19, 20, 21, 22, BLOCK 69, LOTS 1, 2, 3, 4, 5, 6, 7, 8, 9, 10, 11, 12, 13, 14, 15, 16, 17, 18, 19, 20, 21, 22, BLOCK 70, LOTS 1, 2, 3, 4, 5, 6, 7, 8, 9, 10, 11, 12, 13, 14, 15, 16, 17, 18, 19, 20, 21, 22, BLOCK 71, LOTS 1, 2, 3, 4, 5, 6, 7, 8, 9, 10, 11, 12, 13, 14, 15, 16, 17, 18, 19, 20, 21, 22, BLOCK 72, LOTS 1, 2, 3, 4, 5, 6, 7, 8, 9, 10, 11, 12, 13, 14, 15, 16, 17, 18, 19, 20, 21, 22, BLOCK 73, LOTS 1, 2, 3, 4, 5, 6, 7, 8, 9, 10, 11, 12, 13, 14, 15, 16, 17, 18, 19, 20, 21, 22, BLOCK 74, LOTS 1, 2, 3, 4, 5, 6, 7, 8, 9, 10, 11, 12, 13, 14, 15, 16, 17, 18, 19, 20, 21, 22, BLOCK 75, LOTS 1, 2, 3, 4, 5, 6, 7, 8, 9, 10, 11, 12, 13, 14, 15, 16, 17, 18, 19, 20, 21, 22, BLOCK 76, LOTS 1, 2, 3, 4, 5, 6, 7, 8, 9, 10, 11, 12, 13, 14, 15, 16, 17, 18, 19, 20, 21, 22, BLOCK 77, LOTS 1, 2, 3, 4, 5, 6, 7, 8, 9, 10, 11, 12, 13, 14, 15, 16, 17, 18, 19, 20, 21, 22, BLOCK 78, LOTS 1, 2, 3, 4, 5, 6, 7, 8, 9, 10, 11, 12, 13, 14, 15, 16, 17, 18, 19, 20, 21, 22, BLOCK 79, LOTS 1, 2, 3, 4, 5, 6, 7, 8, 9, 10, 11, 12, 13, 14, 15, 16, 17, 18, 19, 20, 21, 22, BLOCK 80, LOTS 1, 2, 3, 4, 5, 6, 7, 8, 9, 10, 11, 12, 13, 14, 15, 16, 17, 18, 19, 20, 21, 22, BLOCK 81, LOTS 1, 2, 3, 4, 5, 6, 7, 8, 9, 10, 11, 12, 13, 14, 15, 16, 17, 18, 19, 20, 21, 22, BLOCK 82, LOTS 1, 2, 3, 4, 5, 6, 7, 8, 9, 10, 11, 12, 13, 14, 15, 16, 17, 18, 19, 20, 21, 22, BLOCK 83, LOTS 1, 2, 3, 4, 5, 6, 7, 8, 9, 10, 11, 12, 13, 14, 15, 16, 17, 18, 19, 20, 21, 22, BLOCK 84, LOTS 1, 2, 3, 4, 5, 6, 7, 8, 9, 10, 11, 12, 13, 14, 15, 16, 17, 18, 19, 20, 21, 22, BLOCK 85, LOTS 1, 2, 3, 4, 5, 6, 7, 8, 9, 10, 11, 12, 13, 14, 15, 16, 17, 18, 19, 20, 21, 22, BLOCK 86, LOTS 1, 2, 3, 4

WAGON WHEEL RANCH #4 SUB  
 BOOK 5 PAGE 9 OF PLATS

# FIR GROVE ESTATES

situate in the  
 NW 1/4 of Section 27, T. 16 N., R 3 E., B.M.  
 Valley County, Idaho  
 DROLLARD LAND SURVEYING  
 APRIL 2005



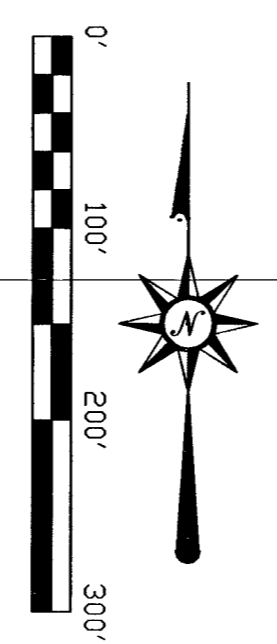
UTILITIES HAVE NOT BEEN INSTALLED AT THE TIME OF THE RECORDING OF THIS PLAT. 2960623

MONUMENT CERTIFICATE

THIS IS TO CERTIFY THAT THIS PLAT IS BEING RECORDED UNDER THE PROVISIONS OF IDAHO CODE 50-1331 THRU 50-1333 AND THAT ALL INTERIOR MONUMENTS WILL BE SET WITHIN ONE YEAR FROM THE RECORDING OF THIS PLAT.

CURVE TABLE

CURVE	RADIUS	ARC LENGTH	CHORD LENGTH	CHORD BEARING	DELTA ANGLE
C26	500.00	318.54	313.18	S 00°20'07" W	36.30°08"
C31	485.00	222.85	222.85	S 17°10'43" W	02°48'58"
C32	535.00	51.90	51.86	S 15°48'26" W	05°33'31"
C34	600.00	371.04	365.15	S 03°51'11" E	35°25'54"
C51	635.00	107.04	106.91	S 04°48'01" E	09°39'29"
C52	565.00	110.93	110.75	S 02°59'29" E	11°14'56"
C53	735.00	102.72	102.63	S 03°17'50" W	08°00'26"
C54	700.00	103.31	102.88	S 12°22'50" W	25°55'10"
C58	150.00	32.41	32.38	N 33°20'36" W	65°35'18"
C59	160.00	30.14	30.10	S 47°34'27" W	10°42'36"
C60	160.00	31.19	31.14	S 58°33'16" W	17°10'72"
C62	735.00	102.89	102.81	E 24°30'52" W	07°48'04"
C63	180.00	23.58	23.50	S 24°30'52" W	07°39'58"
C64	180.00	23.58	23.50	S 24°30'52" W	07°39'58"
C66	180.00	23.58	23.50	S 24°30'52" W	07°39'58"
C67	1000.00	142.02	141.90	N 68°00'28" W	03°23'19"
C68	1000.00	142.02	141.90	N 73°58'27" W	08°08'15"
C69	1000.00	134.89	134.59	N 83°51'05" W	07°43'01"
C70	1000.00	23.85	23.82	N 88°23'14" W	01°21'17"
C71	985.00	328.70	327.12	N 79°18'24" W	19°30'59"
C72	930.00	148.00	147.84	N 77°14'23" W	09°07'04"
C73	930.00	30.19	30.18	N 82°43'42" W	01°51'35"
C74	930.00	87.75	87.72	N 86°21'41" W	09°24'23"
C75	150.00	23.25	20.99	S 44°39'29" E	88°48'47"
C76	150.00	23.87	21.43	S 45°20'31" W	91°11'13"
C77	565.00	9.87	9.87	S 19°57'04" W	01°00'04"
C78	600.00	69.00	68.96	S 17°09'26" W	06°35'20"
C79	635.00	24.13	24.13	S 19°21'47" W	02°10'38"
C80	150.00	22.41	20.38	N 61°04'07" E	65°35'18"
C81	565.00	165.84	165.25	S 11°02'31" W	16°49'03"
C82	635.00	104.42	104.31	S 04°44'23" W	09°25'20"
C83	160.00	111.45	111.45	S 83°54'25" W	39°54'42"
C84	160.00	32.05	32.00	S 36°14'54" W	11°28'42"
C85	160.00	33.29	33.23	S 24°32'52" W	11°58'22"
C86	125.00	186.04	169.34	S 61°13'28" W	65°16'34"
C87	90.00	133.95	121.93	S 61°13'28" W	65°16'34"
C88	930.00	35.62	35.62	N 65°17'18" W	02°15'22"



LEGEND

- Found 5/8 inch rebar
  - Found 1/2 inch rebar
  - ◊ Found aluminum c/p
  - Set 5/8" x 30" rebar w/plastic c/p
  - Set 1/2" x 24" rebar w/plastic c/p
  - ⊙ Block Number
  - ▭ 25' x 25' common driveway easement
- Bearings based on Record of Survey 280385

All side and rear lot lines have a six (6) foot wide permanent easement for the purpose of transporting property and at the same time shall remain free of obstructions and at the natural elevation and shall be maintained by the individual lot owner.

Restrictive Covenants filed as inst. No. 296062

This plat is subject to compliance with I.C. Section 31-3805. No irrigation water will be supplied to any lot herein.

No building or shelter which will require a water supply or a sewage disposal facility for people using the premises where such building or shelter is located shall be erected until written approval is first obtained from the State Board of Health, by its administrator or his delegate approving plans and specifications either for public water and/or sewage facilities or individual parcel water and/or sewage facilities.



